



gorgon at a glance

5x
tallest building

The distance from the ocean surface to the bottom of the Jansz-lo field reservoir is five times the height of the world's tallest building, Burj Khalifa in Dubai.

3.5
thousand average size cars

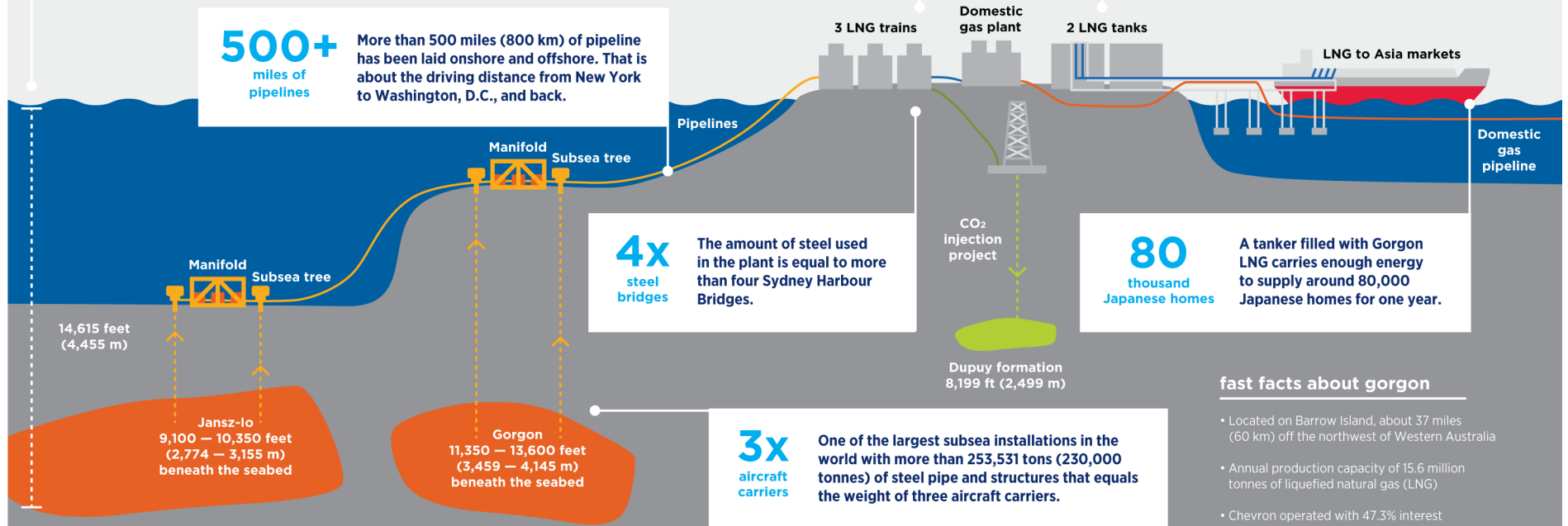
The liquefaction module for LNG Train 1 - one of 51 modules on the plant - weighs more than 3,500 average size cars.

72x
Olympic-size swimming pools

Each LNG tank can hold 6.3 million cubic feet (180,000 cubic meters) of LNG. That is equivalent to about 72 Olympic-size swimming pools.

500+
miles of pipelines

More than 500 miles (800 km) of pipeline has been laid onshore and offshore. That is about the driving distance from New York to Washington, D.C., and back.



4x
steel bridges

The amount of steel used in the plant is equal to more than four Sydney Harbour Bridges.

80
thousand Japanese homes

A tanker filled with Gorgon LNG carries enough energy to supply around 80,000 Japanese homes for one year.

3x
aircraft carriers

One of the largest subsea installations in the world with more than 253,531 tons (230,000 tonnes) of steel pipe and structures that equals the weight of three aircraft carriers.

fast facts about gorgon

- Located on Barrow Island, about 37 miles (60 km) off the northwest of Western Australia
- Annual production capacity of 15.6 million tonnes of liquefied natural gas (LNG)
- Chevron operated with 47.3% interest